



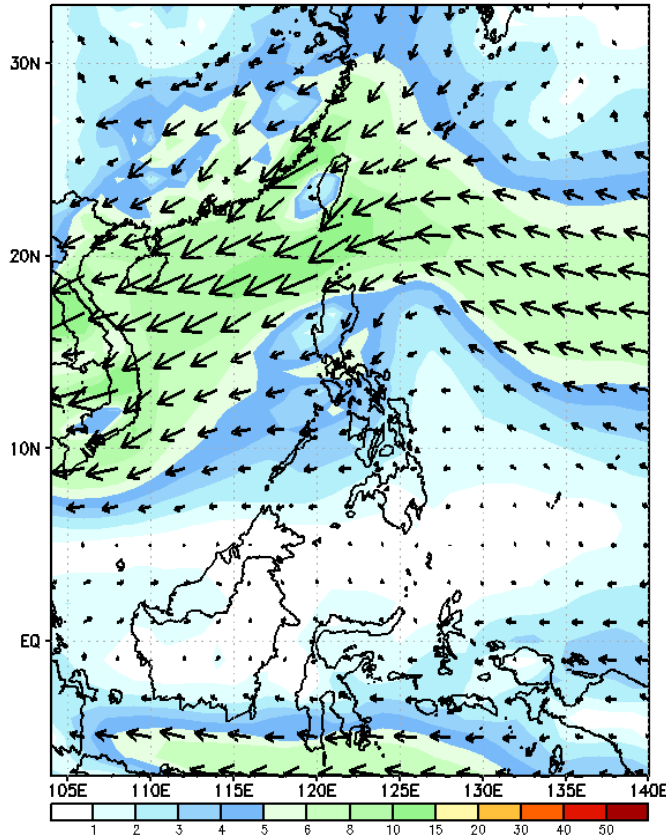
Week 1 & Week 2 Forecast for the Philippines using GEFS Model



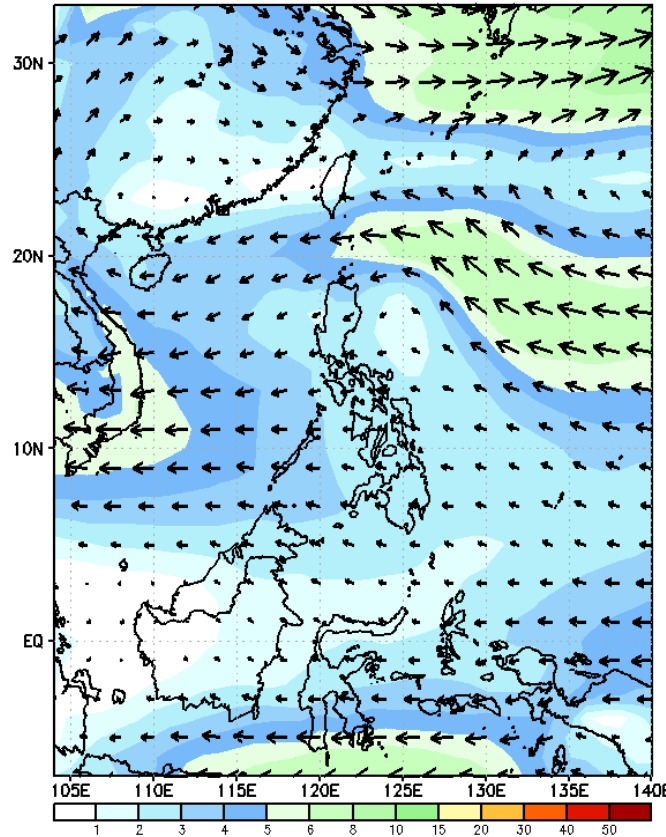
GEFS Week-1 Wind Forecasts:

Week 1: Nov 04-10, 2024

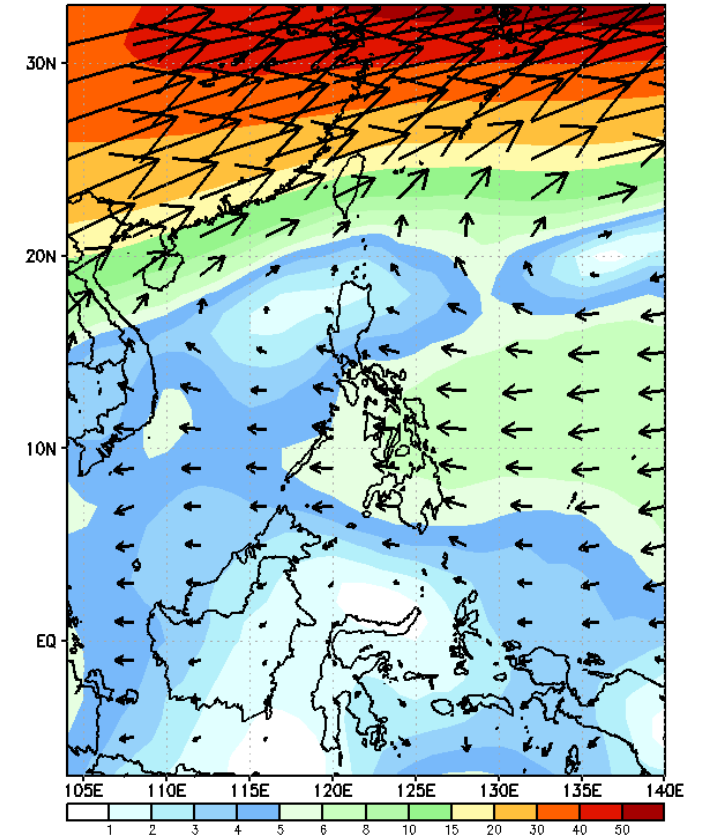
GEFS Week-1 850-hPa Wind Total
Valid: 20241104 - 20241110



GEFS Week-1 700-hPa Wind Total
Valid: 20241104 - 20241110

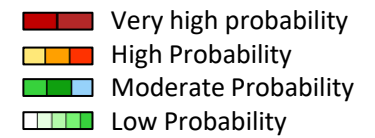


GEFS Week-1 200-hPa Wind Total
Valid: 20241104 - 20241110



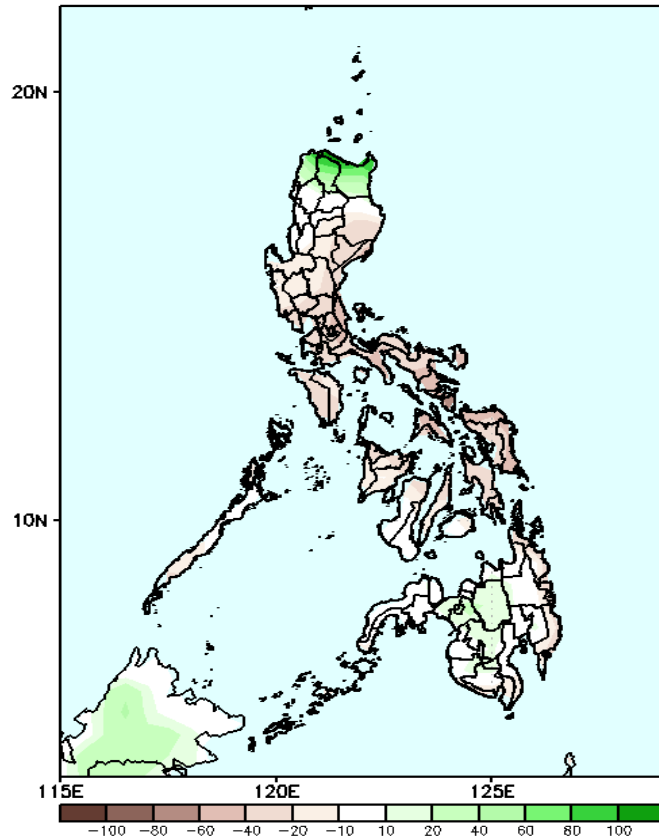
Northeasterly windflow affecting Northern Luzon; Easterlies affecting the rest of the country

Precipitation Anomaly and Exceedance Probability > 25/50 mm

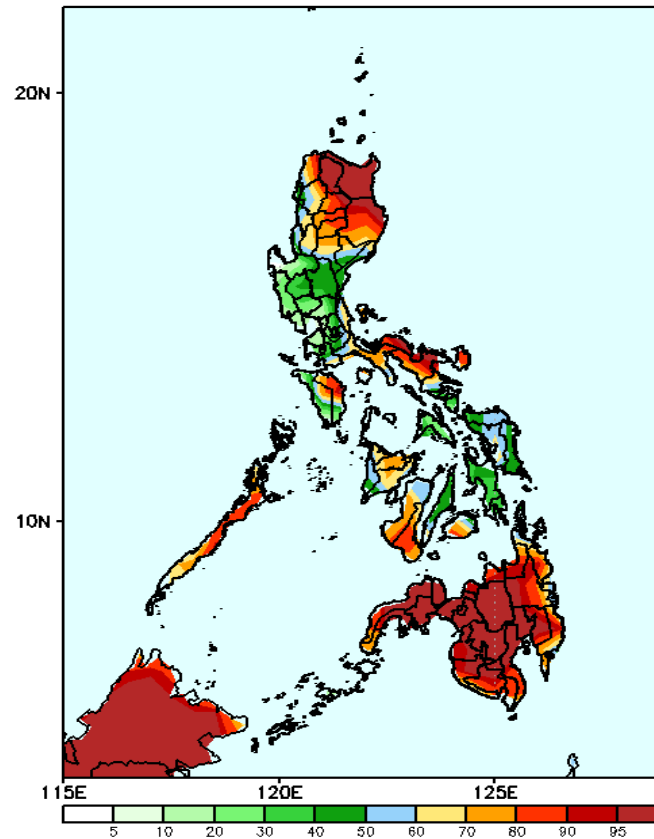


Week 1: Nov 04-10, 2024

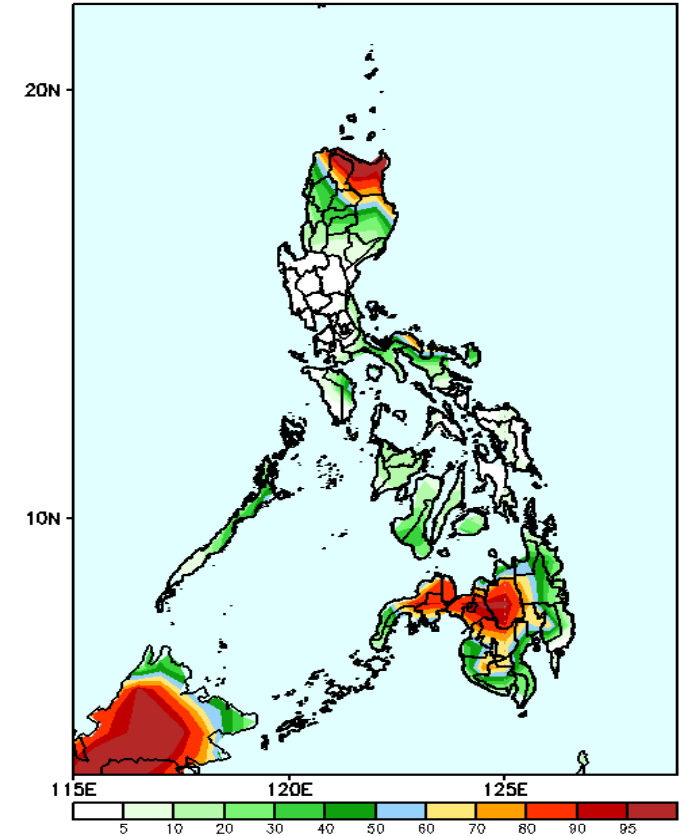
GEFS Week-1 Precip Anomaly
Valid: 20241104 - 20241110



GEFS Week-1 Exceedance Prob. > 25mm
Valid: 20241104 - 20241110



GEFS Week-1 Exceedance Prob. > 50mm
Valid: 20241104 - 20241110



Rainfall deficit of up to 100mm is expected in most parts of the country except Ilocos Norte, Apayao, Cagayan, Extreme Northern Luzon and Central Mindanao where increase of rainfall of up to 80mm will be likely.

Probability to Exceed 25mm

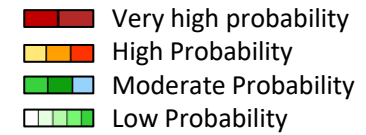
- High to very high over Cagayan, Isabela, the eastern section of CAR, Camarines provinces, Catanduanes, Palawan and most parts of Mindanao.
- Moderate to high over Aurora and the rest of Northern and Southern Luzon and Visayas;
- Low to moderate over the rest of the country.

Probability to Exceed 50mm

- High to very high over Batanes, Apayao, Cagayan, Bukidnon, Lanao provinces, and Misamis Occidental;
- Moderate to high over the northern part of Ilocos and Isabela, Kalinga, Camarines Norte, and the rest of Western and Central Mindanao;
- Low to moderate over the rest of the country.

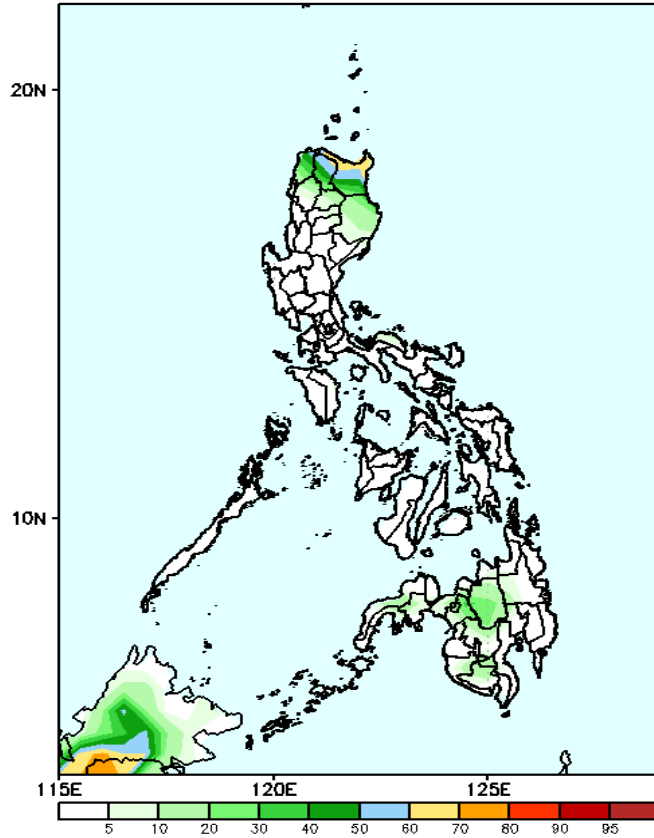


Exceedance Probability > 100/150/200 mm



Week 1: Nov 04-10, 2024

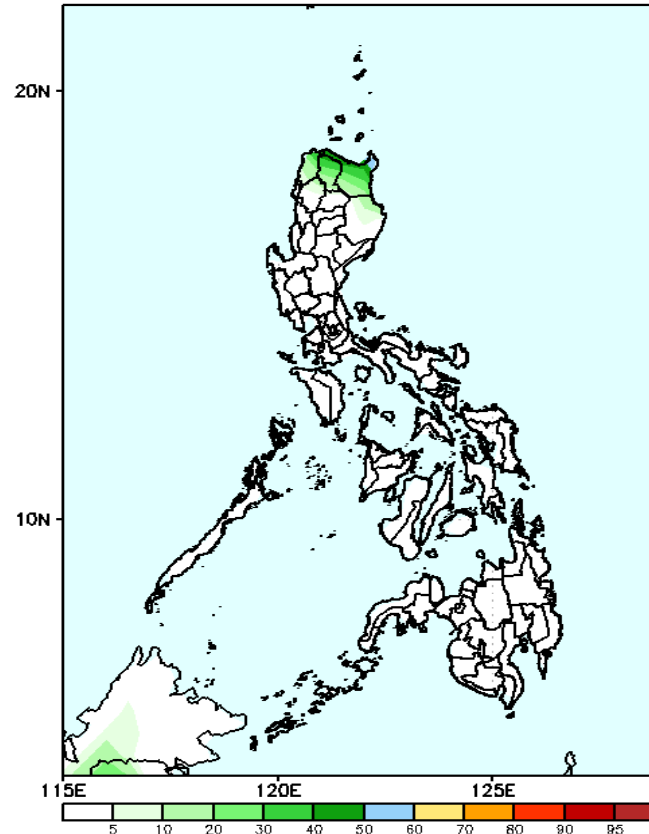
GEFS Week-1 Exceedance Prob. > 100mm
Valid: 20241104 - 20241110



Probability to Exceed 100mm

- Moderate to high over Batanes, Cagayan, and Apayao;
- Low over the rest of the country;

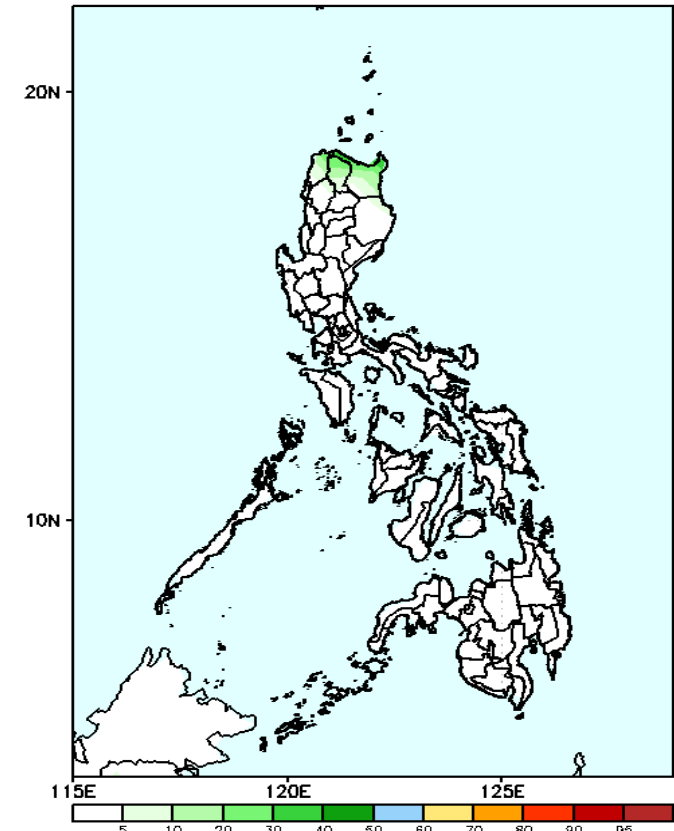
GEFS Week-1 Exceedance Prob. > 150mm
Valid: 20241104 - 20241110



Probability to Exceed 150mm

- Moderate to high over Batanes, and the northern part of Cagayan;
- Low over the rest of the country;

GEFS Week-1 Exceedance Prob. > 200mm
Valid: 20241104 - 20241110



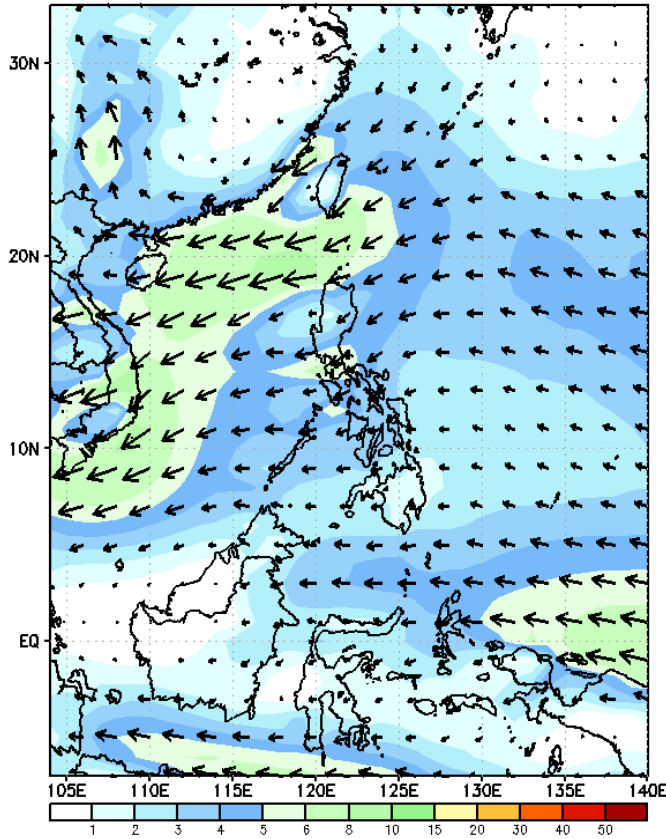
Probability to Exceed 200mm

- Low across the country.

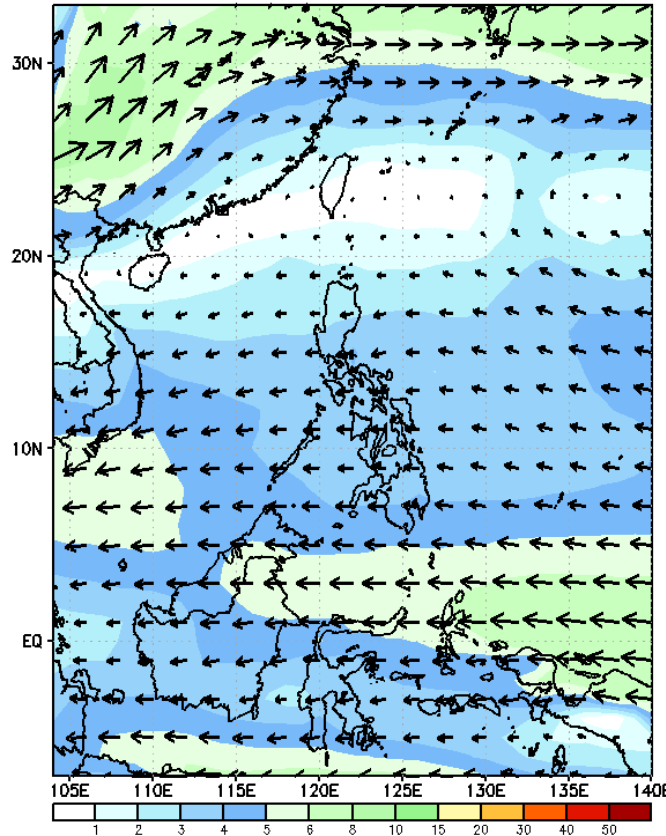
GEFS Week-2 Wind Forecasts:

Week 2: Nov 11-17, 2024

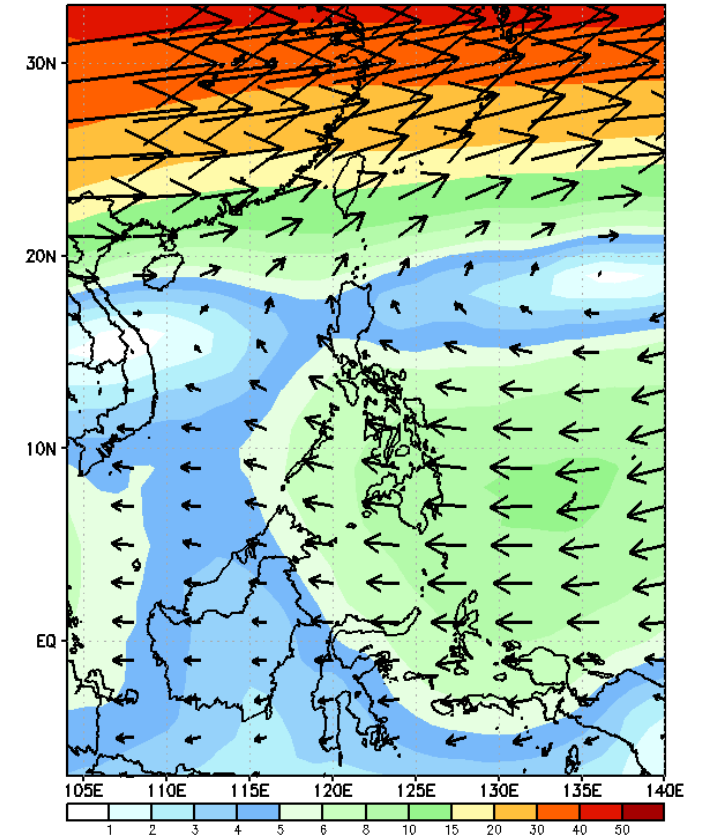
GEFS Week-2 850-hPa Wind Total
Valid: 20241111 - 20241117



GEFS Week-2 700-hPa Wind Total
Valid: 20241111 - 20241117

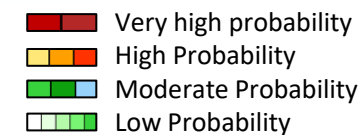


GEFS Week-2 200-hPa Wind Total
Valid: 20241111 - 20241117



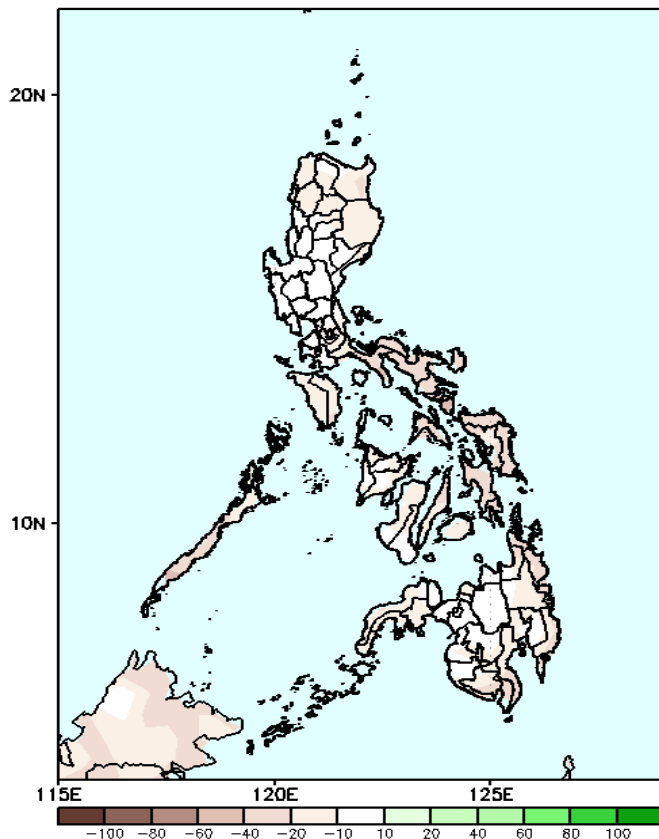
Northeasterly windflow is forecasted to affect Northern Luzon; Easterlies will likely affect the rest of the country.

Precipitation Anomaly and Exceedance Probability > 25/50 mm



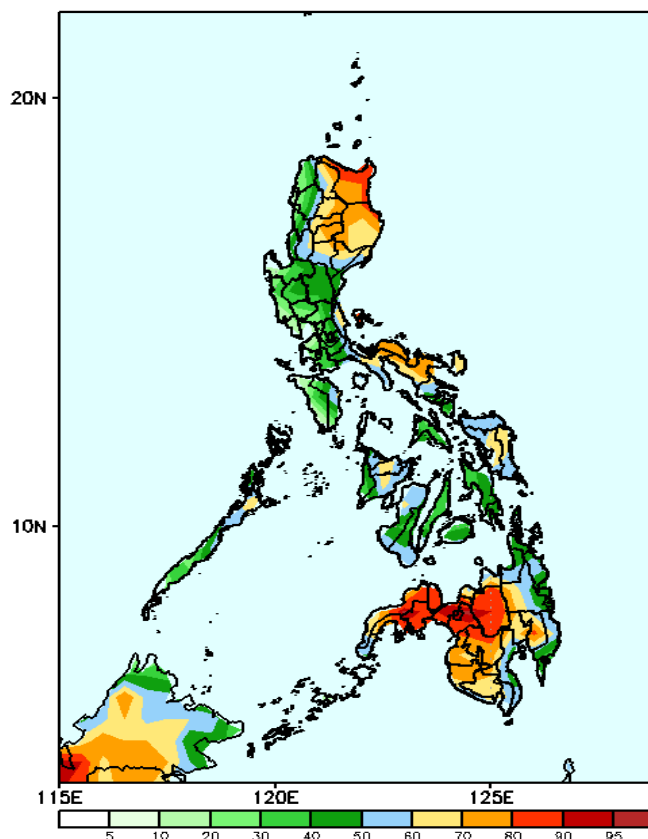
Week 2: Nov 11-17, 2024

GEFS Week-2 Precip Anomaly
Valid: 20241111 - 20241117



Rainfall deficit of up to 60mm is most likely over most parts of the country.

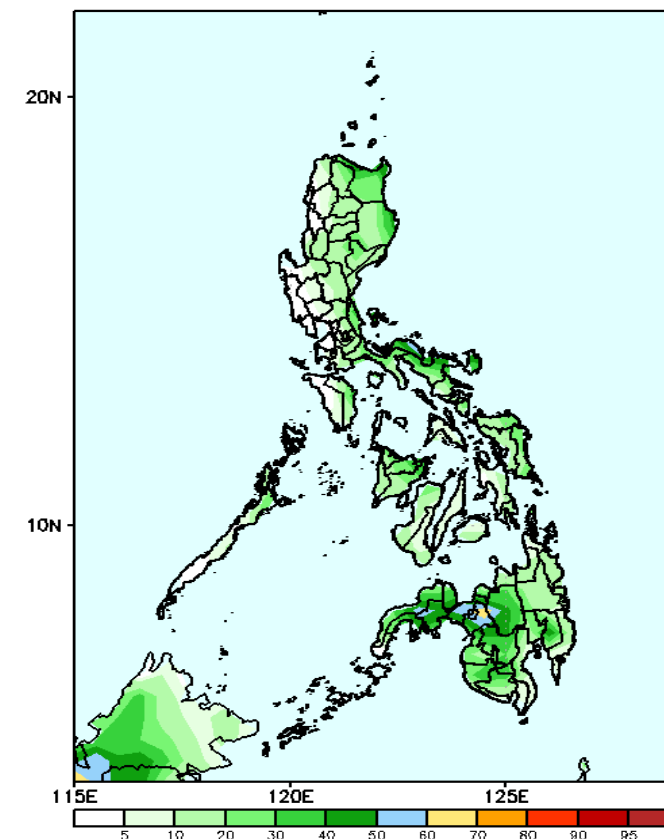
GEFS Week-2 Exceedance Prob. > 25mm
Valid: 20241111 - 20241117



Probability to Exceed 25mm

- High to very high over Extreme Northern Luzon, northern part of Cagayan, Bukidnon, Lanao provinces, Misamis Occidental and Zamboanga del Sur;
- Moderate to high over the rest of the country.

GEFS Week-2 Exceedance Prob. > 50mm
Valid: 20241111 - 20241117



Probability to Exceed 50mm

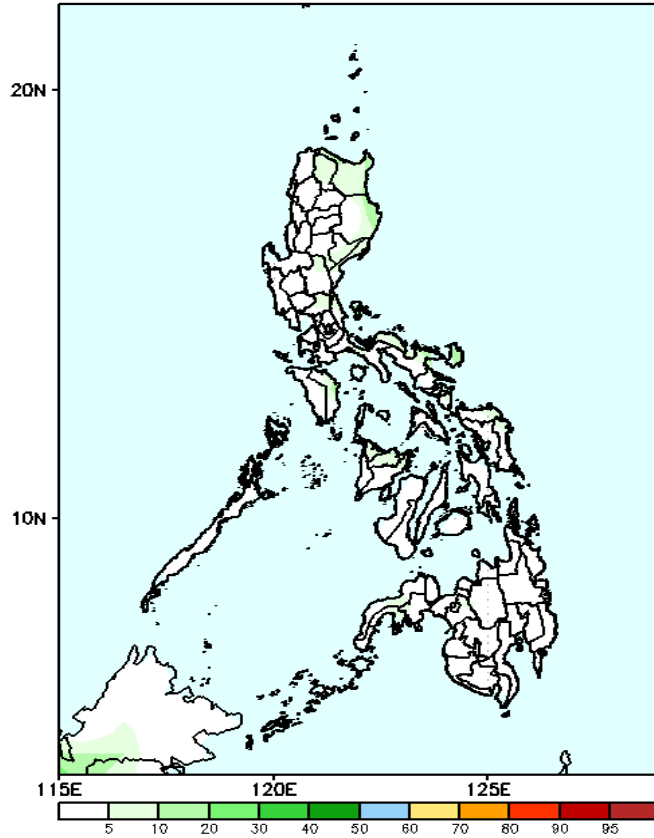
- Moderate to high over Camarines Norte, eastern portion of Bukidnon and Lanao provinces;
- Low to moderate over the rest of the country.

Exceedance Probability > 100/150/200 mm

- Very high probability
- High Probability
- Moderate Probability
- Low Probability

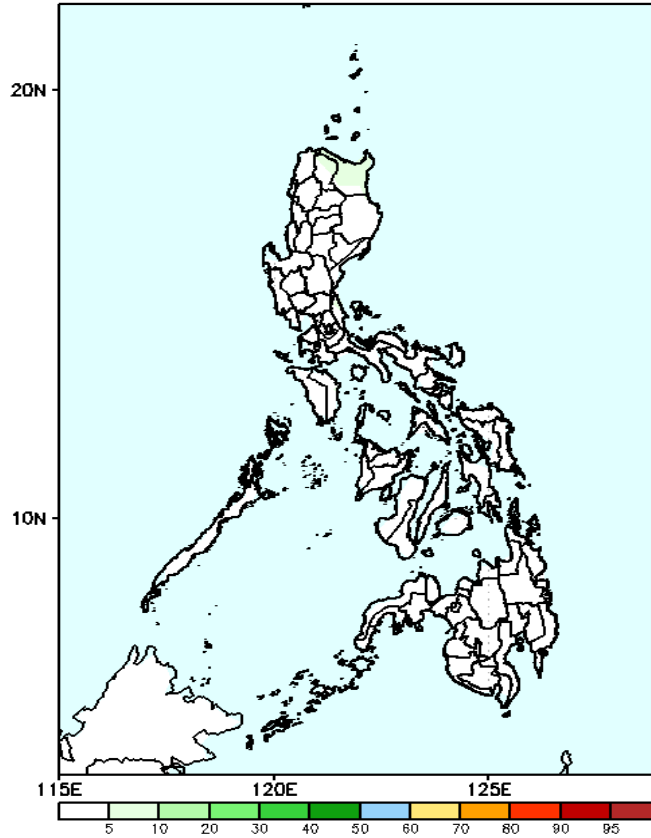
Week 2: Nov 11-17, 2024

GEFS Week-2 Exceedance Prob. > 100mm
Valid: 20241111 - 20241117



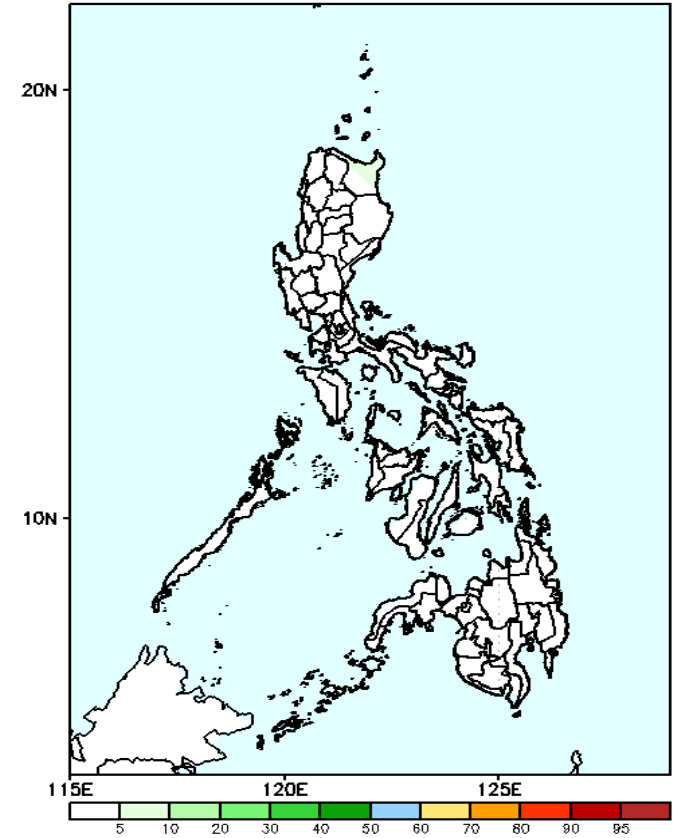
Probability to Exceed 100mm
• Low across the country.

GEFS Week-2 Exceedance Prob. > 150mm
Valid: 20241111 - 20241117



Probability to Exceed 150mm
• Low across the country.

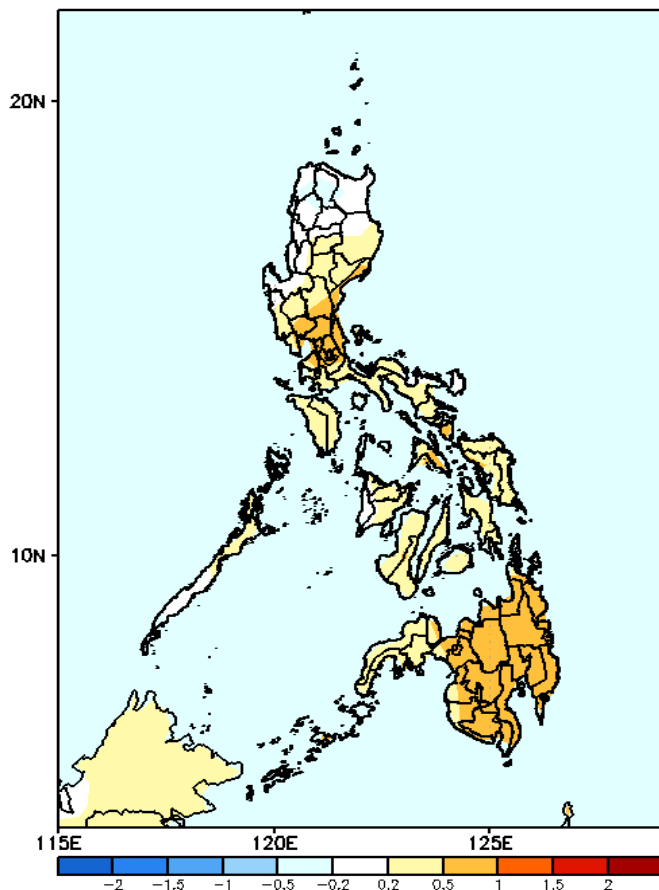
GEFS Week-2 Exceedance Prob. > 200mm
Valid: 20241111 - 20241117



Probability to Exceed 200mm
• Low across the country.

GEFS Week-1 & 2 Forecasts: T2m Anomaly

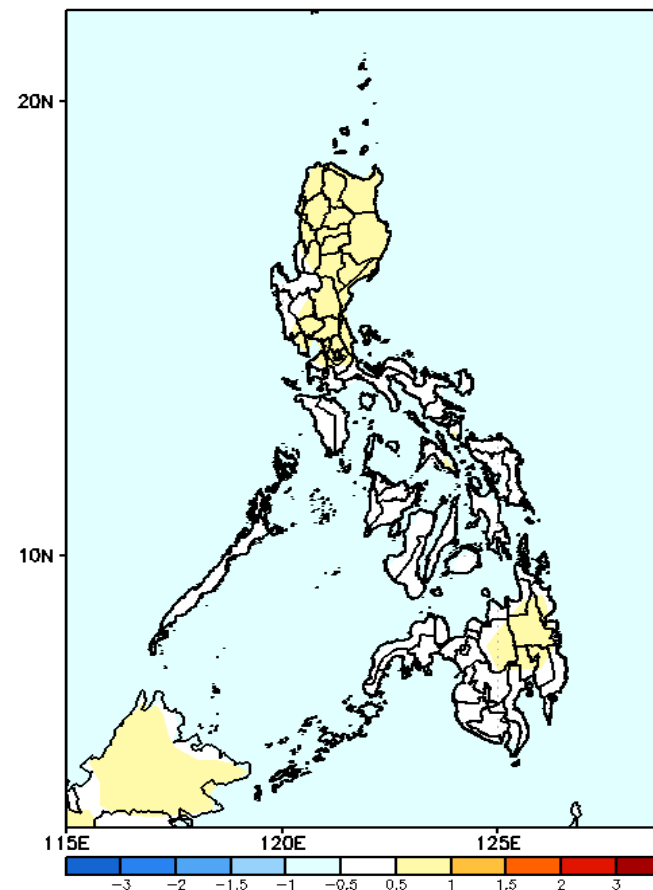
GEFS Week-1 T2m Anomaly
Valid: 20241104 - 20241110



2m Temperature Week 1: Nov 04-10, 2024

Near to slightly warmer than average surface air temperature will likely be experienced in the northern part of Northern Luzon while slightly warmer than average surface air temperature will be likely for the rest of the country.

GEFS Week-2 T2m Anomaly
Valid: 20241111 - 20241117



2m Temperature Week 2: Nov 11-17, 2024

Near to slightly warmer than average surface air temperature will likely be experienced in most parts of the country.

